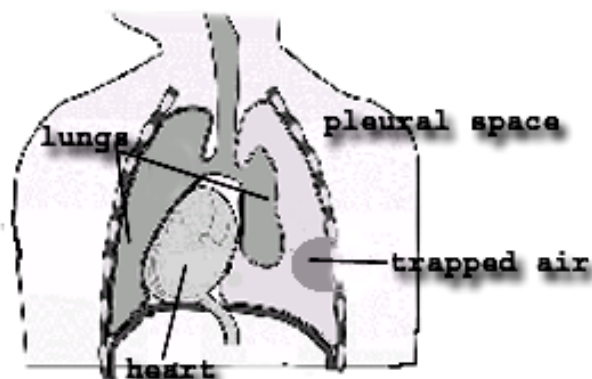


Pneumothorax

About Your Injury

You have had an injury to your chest. This has caused air and/or blood to go from your lung into an area between the lung and the chest wall called the pleural space. This has caused your lung to collapse.



About Chest Tubes

Your doctor will look at your x-ray and decide if you need a chest tube. This is a tube that is inserted into the pleural space to drain the air and/or blood. The tube will be attached to a container that will collect what drains from the tube. The chest tube will be removed when the doctor knows it is safe to remove it.

If you have stitches, ask your doctor when they should be removed.

Discharge Instructions

- Activity as tolerated.
- Hold pillow or hand against hurt area when coughing.
- Use the Incentive Spirometer as advised by your doctor.
- Take pain medication as directed.
- Remove chest wall dressing two days after the chest tube is removed, keep covered with gauze and change daily until there is no discharge.
- You may shower after chest wall dressing removed.
- No flying for four weeks.

Call Trauma Clinic if you have

- **Temperature over 102 degrees.**
- **Increased shortness of breath.**
- **Return of sharp stabbing chest pain.**
- **Persistent cough.**
- **If you repeatedly cough up blood.**

**Your Trauma Clinic
Appointment is on**



Trauma Clinic (814) 877-4577

Revised: March 2008