

Medical Management of CAD

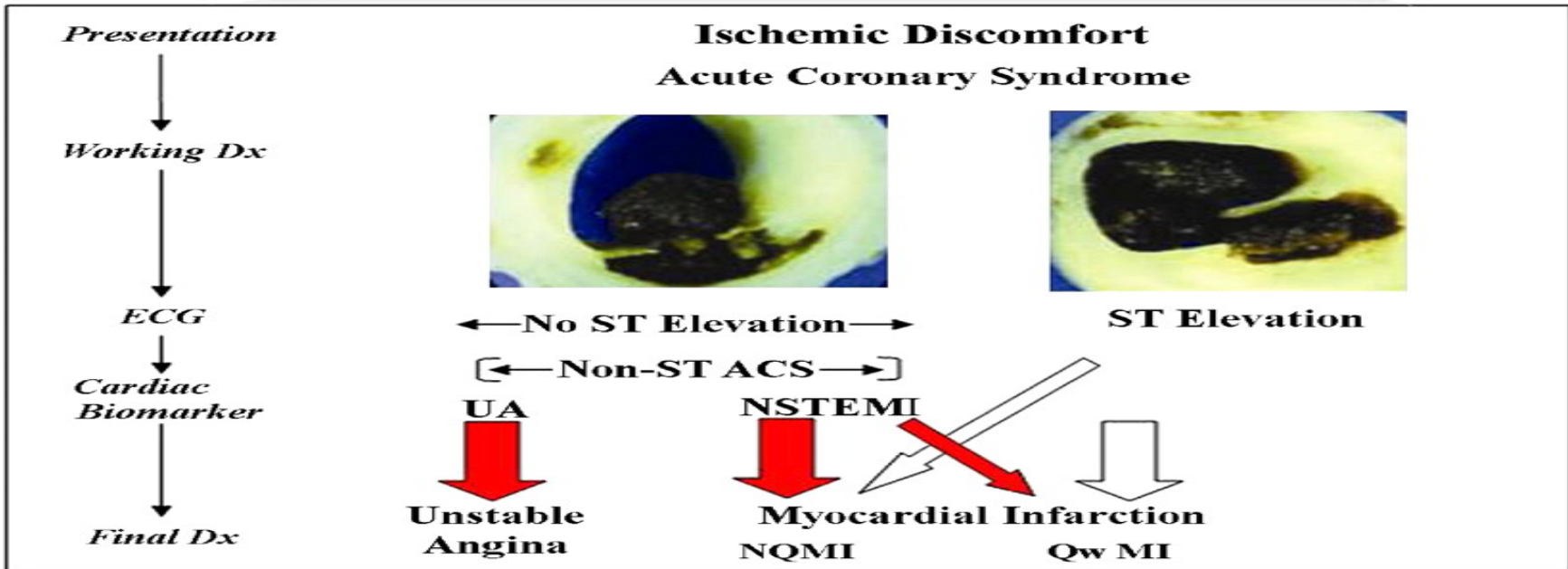
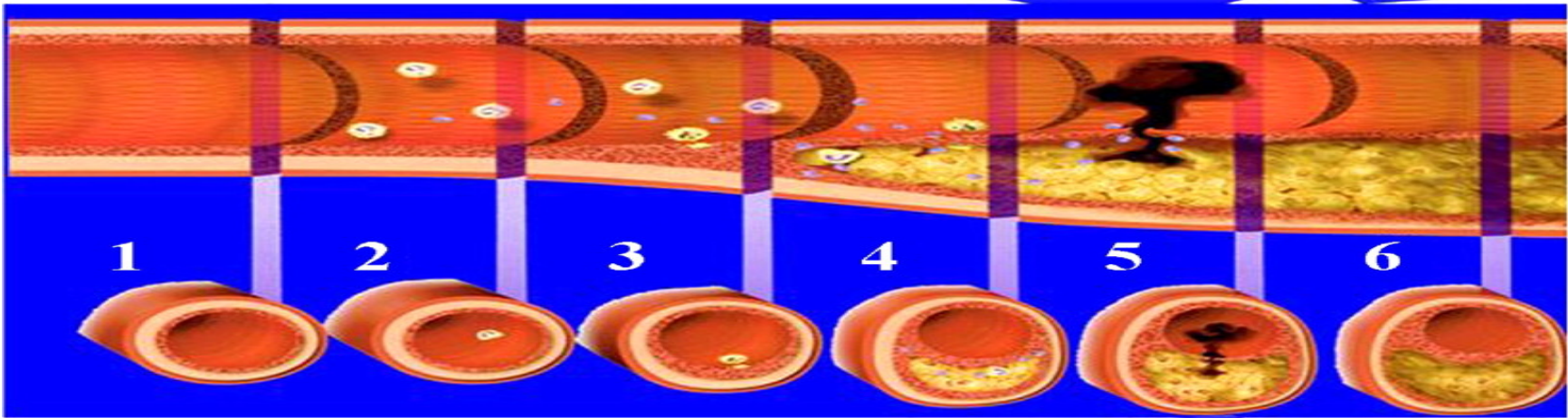
Paul Kang, MD

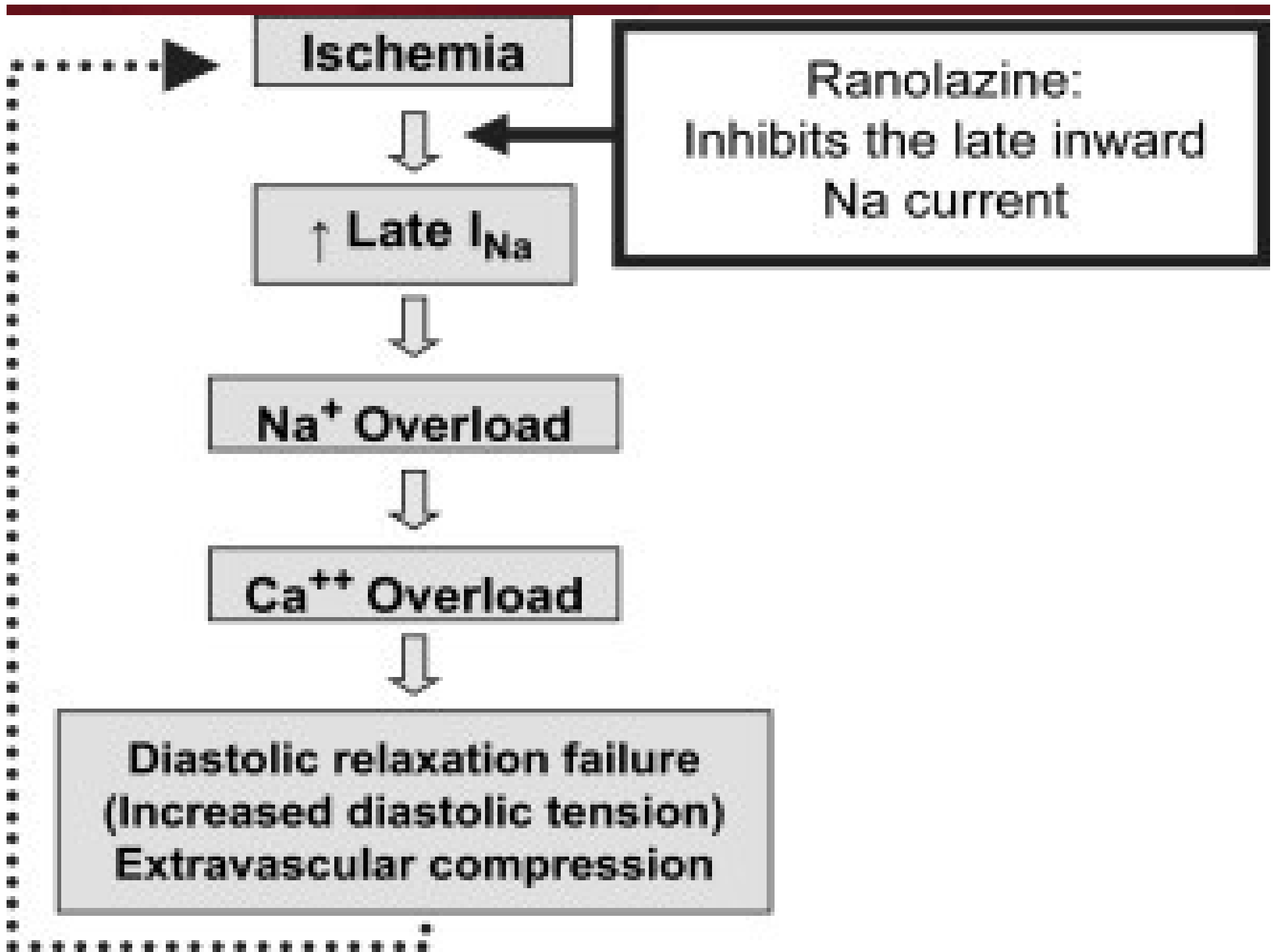


Onset of UA/NSTEMI -Initial recognition and management in the Emergency Department -Risk Stratification -Immediate Management	Hospital Management - Medications - Conservative versus Invasive Strategy - Special Groups - Preparation for discharge
---	---

Management Prior to UA/NSTEMI

Secondary Prevention/
Long-Term Management





Ischemia

**Ranolazine:
Inhibits the late inward
Na current**

↑ Late I_{Na}

Na⁺ Overload

Ca⁺⁺ Overload

**Diastolic relaxation failure
(Increased diastolic tension)
Extravascular compression**