

The Role of Telemedicine in Cardiovascular Medicine

October 7, 2009

Val Jackson, MS

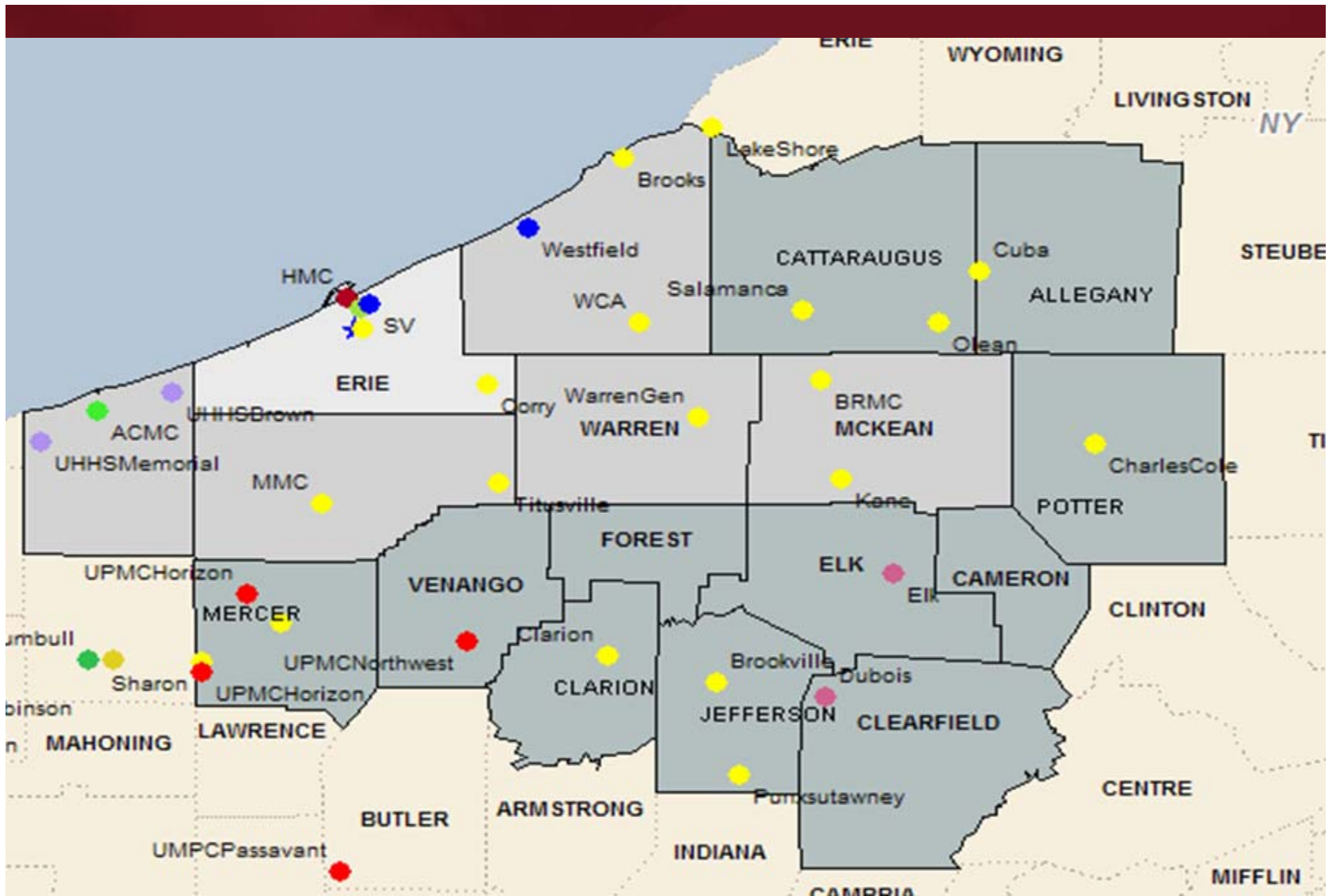
Regional Director, Hamot Heart Institute

Program Director, Telemedicine



Regional Partnership Philosophy

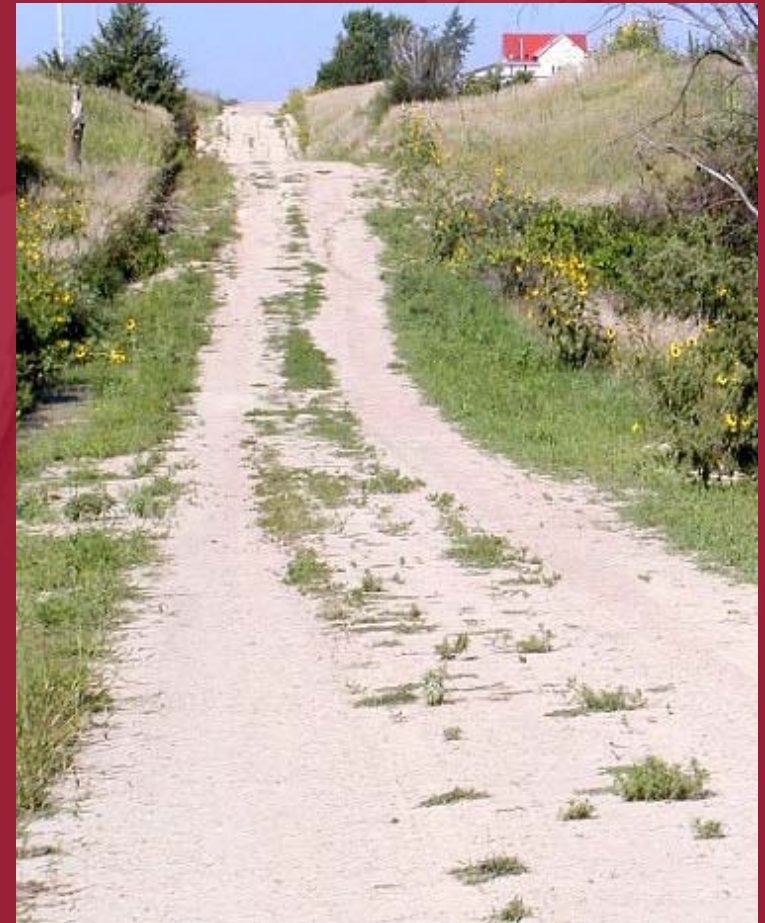
- “Local care, local control and local monies should stay in the local community”



Why Telemedicine?

- Specialty clinics (cardiology, neurology) physicians traveling since 1995
- Medikor Associates – 10 regional clinics
- Supply/demand

Distance and Weather



What Is Telemedicine?

- Live, interactive healthcare at a distance
- Utilizes sophisticated videoconferencing technology to provide healthcare expertise
 - Synchronous: real-time, interactive, two-way
 - Asynchronous: “store and forward”
- Different modality and different healthcare model than what we are traditionally accustomed

Keys To Telemedicine

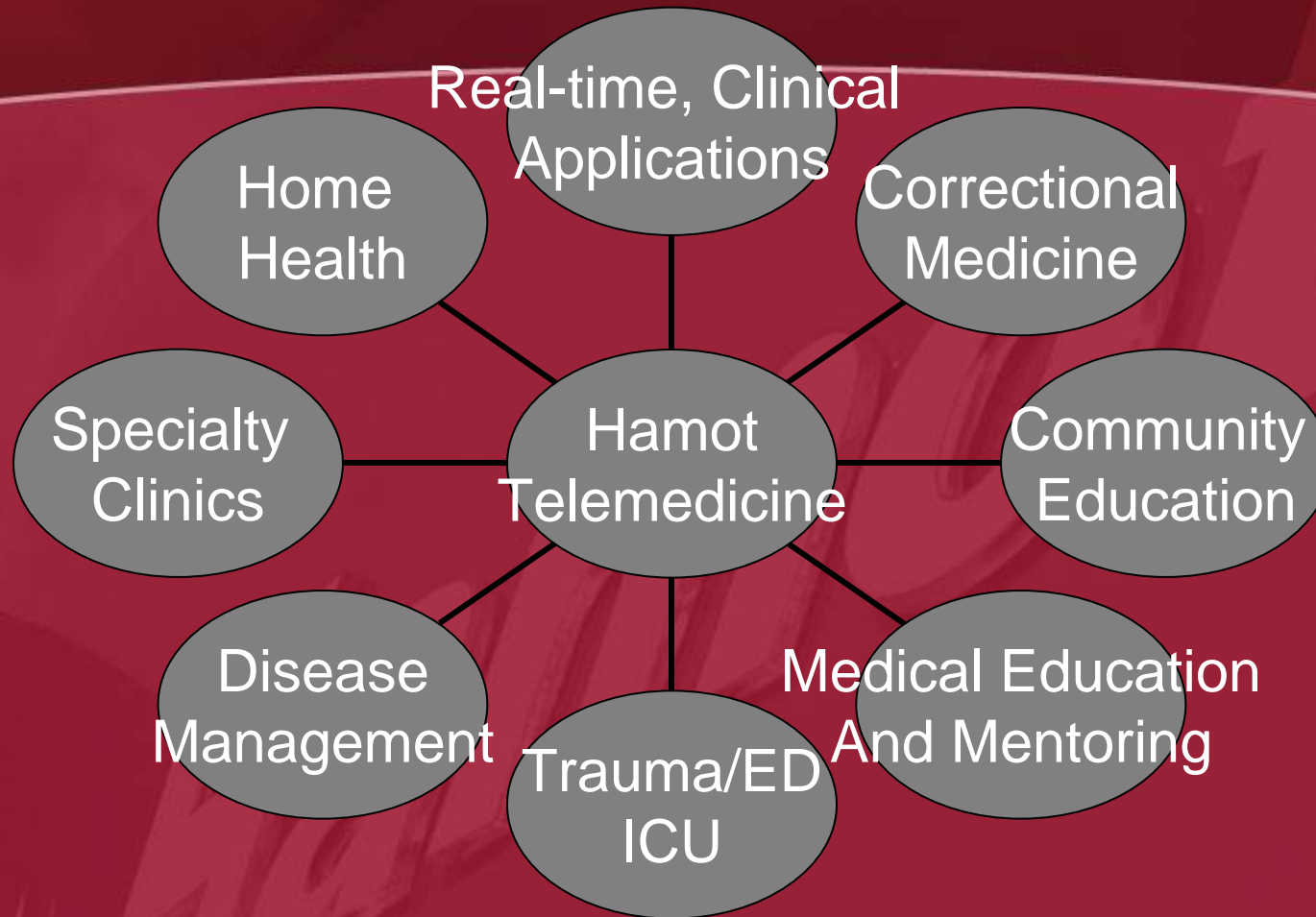
- Willing providers!
- Must be as easy as face to face
- Must provide the quality of face to face
- Must have established guidelines - which patients/conditions are appropriate?
- Must address a genuine clinical need
- Everyone must benefit – patients, PCP, specialists

Keys To Telemedicine

- Does not replace face to face provider consultations but does:
- Increase access to care
- Provide collaboration between a specialist and a referring physician or allied health professional
- Keeps patients local
- Potentially decreases healthcare costs – address disease process sooner
- Reduces travel
- Provides educational opportunities

Peripheral Devices





Hamot Locations

- Kane Community Hospital
- Bradford Regional Medical Center
- WCA – Jamestown, NY (catheterizations)
- Elk Regional Health Center
- Charles Cole Memorial Hospital
- Pennsylvania Correctional Institutes

Hamot Telemedicine

- Specialty Evaluation and Follow-Up
 - Cardiology / Electrophysiology
 - Neurology
 - Cardiovascular Surgery
- Diagnostic Interface
 - Catheterization lab
 - Echocardiography and Nuclear Stress Test
 - EEG transmission
- Education

Hamot Telemedicine – Other Applications and Willing Providers

- Disease management – Diabetes, Heart Failure
- Patient/community education
- Bariatric surgery – pre/post education
- Trauma Follow-up
- Plastic surgery
- ED/CCU oversight

Heart Failure Clinic

- Over 800 HF patients in Medicor HF Clinic
- 40% reduction in re-admission
- Working with PCP, HF clinic allows more stringent monitoring of a patient's condition – may be a couple times per week, weekly or monthly
- Regional patients unable to participate because of distance

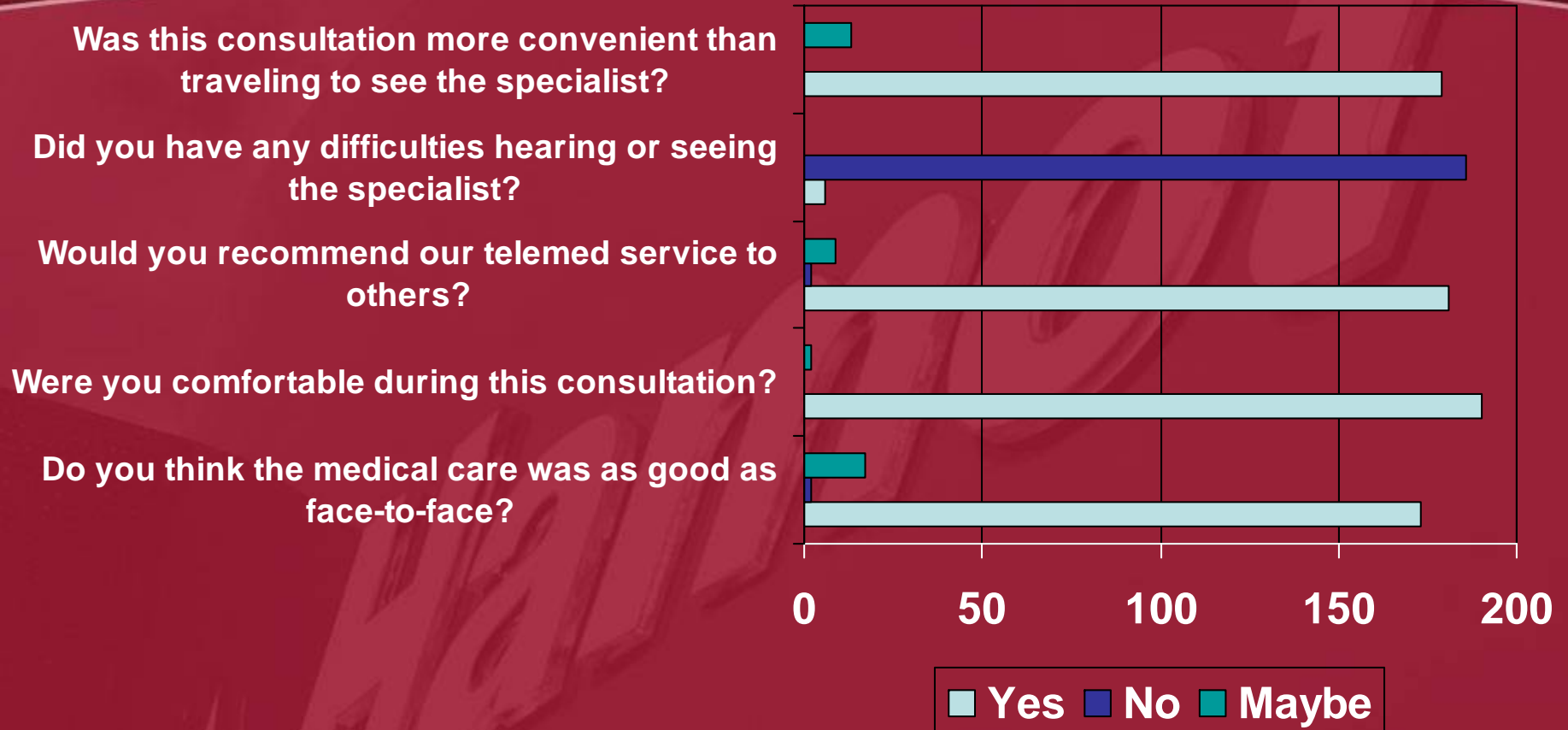
Heart Failure Clinic

- Sharing of optimal treatment protocols allows better patient management in their local communities
- Increase survival and quality of life, decrease HF hospitalization and health care costs
- “High tech, high touch” – most HF telemed programs are accomplished by home monitors or a phone call to self report weight and symptoms

Cardiac Rehabilitation

- Regional rehab departments have few resources available to assist with patient education
 - Hamot Cardiovascular Disease Management team conducts an outpatient education program to review all the information gathered during a hospital stay
 - Regular education sessions as part of cardiac rehabilitation program

Patient Satisfaction



Thank You!

Office: x 2505

Cell Phone: 814-598-2078

Email: val.jackson@hamot.org

